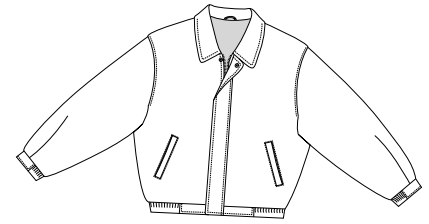
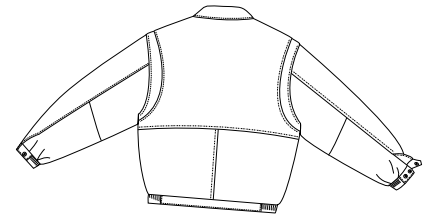


Leather Bomber Jacket

PORT | AUTHORITY®
SIGNATURE



Front



Back

J780

- * Action back (pleated folds in upper back) * Top grain leather
- * Fully lined with quilted nylon * Storm placket covers front zipper and snaps * Elastic waist
- * Elastic cuffed sleeves are adjustable with snaps * Inside and outside pockets

Care Instructions:

Dry clean by
leather specialist.

Finished Measurements in Inches

Size	XS	S	M	L	XL	2XL	3XL	4XL
Length	25	25.5	26	26.5	28	28.5	29.5	30
Chest	22.5	24	25.5	27	28.5	30	31.52	33
Sleeve	32	34	36	37	38	38.5	39	39.5
Areas for Decoration	Left Chest		Port Pocket™		inside left zipper flap			

Chest width measured 1" below arm hole. Body length measured from center back neck seam to hem.
Sleeve length measured from center back seam to hem.

Colors

Black

Please Note:

Colors shown are approximate and for reference only. For closest match see PMS colors, or for exact match, returnable samples and grommeted samples are available.

Color Chart

Base Color	Black
Textile PMS	No Match
General PMS	Black Hexachrome C